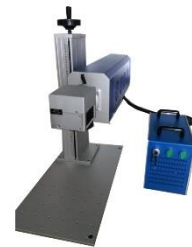


CO2 Laser Marker

Product Description

Laserwares's CO2 laser marking machine use advanced RF metal laser tube and high-speed laser scanning system. Using software control modules, low power consumption, long life marking ,stable and perfect marking quality support . Maintenance-free. Widely used in tobacco ,bio-pharmaceuticals, wine industry, food and beverage, health care products, electron industry, arts and crafts, clothing and appendix etc.

It provides over 100000 hours of maintenance free fiber laser engraving/markng, of the highest quality.



Performance Specifications

CO2 Laser Marker	Specification	Unit
Operation Wavelength	10.64	um
Nominal Output Power	10/30/60	W
Marking Depth	>2	mm
Max. Marking Speed	7000	mm/s
Marking Area ¹	70x70	mm
Min Line Width	0.1	mm
Repeatability Precision	0.01	mm
Longtime Power stability	<5	%
Power tunable Range	5-100	%
Operating Voltage	110	V
Cooling	Air	
Operating Temperature	0-40	°C
Storage Temperature	-10-60	°C
Weight	60	KG

Note:

1. 100x100mm/140x140mmoptional.

Features

- High Performance
- Long Lifetime
- High Beam Quality
- Maintenance Free
- Compact Size

Applications

- Organic Materials Marking
- Car Parts
- Arts
- Plastic Marking



**BUREAU
VERITAS**

CO2 Laser Marker

Other Options:



Features

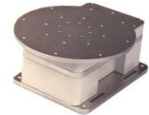
- High Performance
- Long Lifetime
- High Beam Quality
- Maintenance Free
- Compact Size

Applications

- Organic Materials Marking
- Car Parts
- Arts
- Plastic Marking

**Ordering Information: LWCM-XXPC (XX= power)
For example 30W : LWCM-30PC**

Accessories:



**BUREAU
VERITAS**